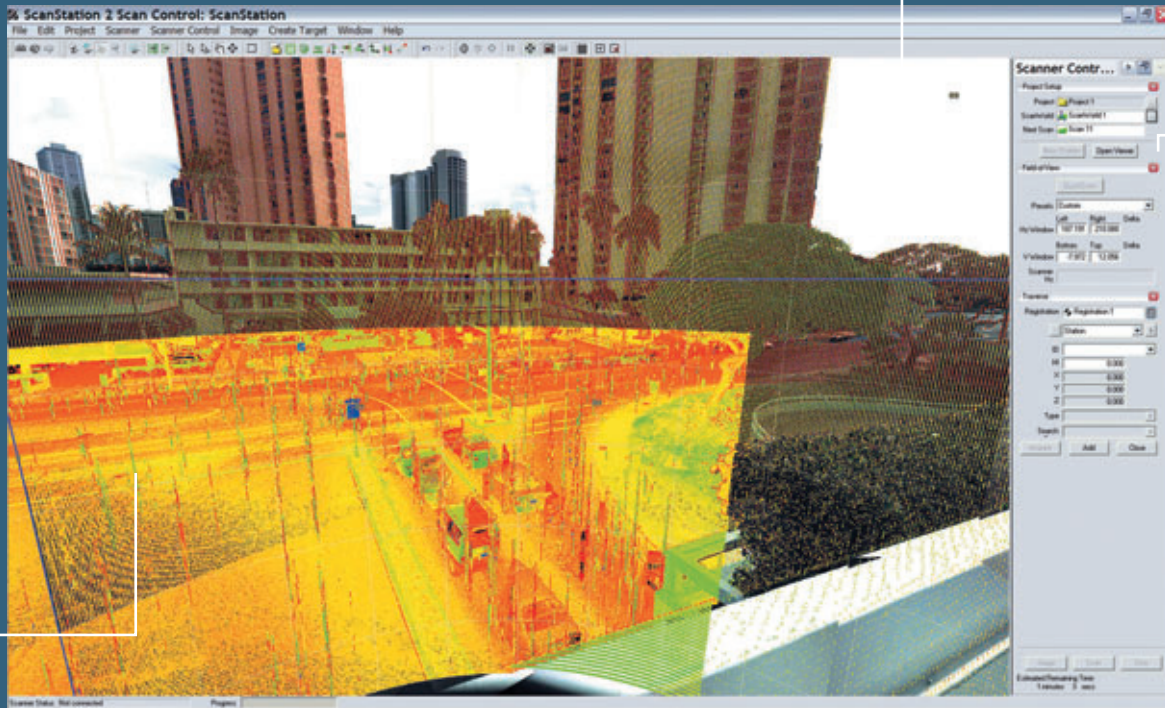


# Leica Cyclone SCAN 6.0

## Versatile, Powerful Laser Scanner Control Software

Background image from camera in scanner provides easy interface for selecting which areas to scan



Controls for scan field-of-view, scan, density, traverse workflow and project setup.

Point clouds are displayed in panoramic viewer even as the scan is underway.

### Easy-to-learn software optimizes High-Definition Survey™ projects

Leica Cyclone SCAN is versatile, easy-to-learn laser scanner control software that optimizes High-Definition Survey™ projects.

Cyclone SCAN 6.0 gives Leica Geosystems HDS scanner operators unmatched scan control and multiple workflow options. Users enjoy greater flexibility in managing a wide range of site logistics and project requirements, all with renowned Leica accuracy.

Cyclone SCAN operates time-of-flight and phase-based Leica Geosystems scanners. Scanner-specific features let users get the most out of each type of scanner. Users can take advantage of workflows like traversing, setting up over a known point, and

resectioning; full-dome scanning; applying internal or external camera images; wireless and unattended operation; and, a wealth of field QA tools. Cyclone SCAN features also speed office processing and reduce file sizes.

### Features and Benefits

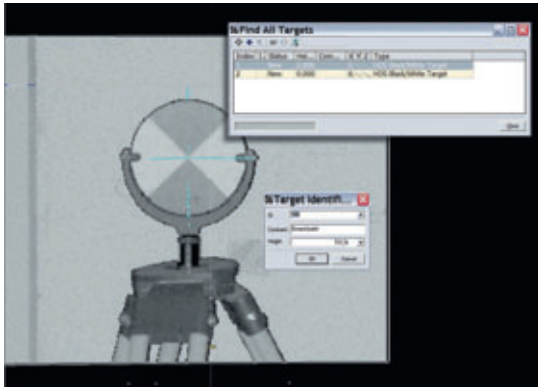
- SmartScan Technology™
- Field geo-reference and auto-register\*
- Auto target recognize/extract/re-check
- Check scans against independent control
- Field QA checks of targets, features
- Traverse, resection, stakeout, point\*
- Auto-calibrate and apply images to scans\*
- X-function, LandXML, ASCII

\* Some features are scanner dependent

- when it has to be **right**

**Leica**  
Geosystems

# Leica Cyclone SCAN 6.0



Automated routines can find all candidate targets in the scene. Once the first target is found by the search algorithm users can easily acquire the exact center point and name targets, even while the system searches for more targets.



Leica Cyclone SCAN can operate all of the various time-of-flight and phase-based Leica scanners: HDS2500, HDS3000, HDS4500, HDS6000, HDS6100, ScanStation and ScanStation 2.

## High Field Efficiency and Comprehensive Control

Leica Cyclone SCAN provides high productivity and great scanner control. Smart-Scan Technology™ provides fully adjustable, horizontal and vertical scan density control\*. Traditional traverse methods are supported. Scripting allows different parts of a scene to be automatically scanned at different scan densities. Targets are recognized and extracted.

## Efficiency in the Office

Various scan filters can automatically exclude capture of scan data that is outside of the desired scan area, not accurate enough due to excessive range, etc. Convenient target ID's, internal, automatically calibrated high-resolution camera images\* and automatic linking of scans with images\* are all additional handy aids for speeding office processing. Cyclone SCAN's support of "tilt sensor enabled" field methods\* can even produce automatically registered point clouds as they're collected in the field.

## Ensuring Leica Geosystems Accuracy

To ensure proper scan coverage and density, scans can be viewed on a laptop in the field. Users can check scan data against elevation data collected by other methods. Scan targets can be extracted and registered/geo-referenced in the field and control point data and coordinates can be imported and exported. Scanners with dual-axis tilt sensing can be monitored to ensure level accuracy, while traverse closure reports and other standard reports for resection, setup over known point, and backsight provide valuable QA data analysis.

## Easy to Learn

It's easy to select desired scan areas from rectified, high-resolution camera images or a quick "preview scan". Integrating HDS data with data from Leica's TPS and GPS 1200 series is fully supported via X-function while other instruments are supported via standard LandXML or ASCII formats.

Leica Cyclone SCAN 6.0 Specifications*		Hardware and System Requirements
<b>Controls</b>	Vertical & horizontal scan density control Scripting capability for automatic sequencing of scans	<b>Notebook PC for Scanning</b>
<b>Workflow</b>	Automatic target acquisition, Traverse & Resection	<b>Processor:</b> 1.4 GHz Pentium M or higher
<b>Control data</b>	Auto compare control data to scan data In-field data geo-referencing	<b>RAM:</b> 1 GB (2 GB for Windows Vista)
<b>Camera</b>	Acquire and display digital image (scanner with camera)	<b>Hard Disk:</b> 2 GB
<b>Viewing</b>	Full 3D fly, pan, zoom, rotate; panoramic, full-dome viewing options Control color mapping using intensity, true-color, gray scale, color by elevation, etc.	<b>Network card:</b> Ethernet (required for licensing), FireWire / I-link (IEEE 1394) for Leica HDS4500 scanner only
<b>Hardware</b>	Calibration check, Dual Axis Compensator management Control of: Leica HDS2500 and HDS3000 Leica HDS4500, HDS6000 and HDS6100 Leica ScanStation and ScanStation 2	<b>Display:</b> SVGA or OpenGL accelerated graphics card (with latest drivers)
<b>Import</b>	Data from CAD via COE (Cyclone Object Exchange) Control data from ASCII formats & X-Function DBX	<b>Operating system:</b> Microsoft Vista** (32 or 64), or Microsoft Windows XP (SP2 or higher) (32 or 64), or Windows 2000 (SP3 or higher with up-to-date patches)
<b>Export</b>	Point data in standard formats: XYZ, PTS, PTX, DXF, X-Function DBX, Land XML, etc. Point data in special formats: PTZ, ZFS, TOPO pci & cwf Image and model data: COE, BMP, JPEG, TIFF	<b>File System:</b> NTFS

\*\* Some systems may not support Windows Vista's Desktop Windows Manager (DWM) with Leica Cyclone and must be operated in Windows Classic Look.

Windows is a registered trademark of Microsoft Corporation. Other trademarks and trade names are those of their respective owners.

\* Reference the Leica Cyclone 6.0 Technical Specifications document for a complete listing of product specifications.

Illustrations, descriptions and technical data are not binding. All rights reserved. Printed in Switzerland - Copyright Leica Geosystems AG, Heerbrugg, Switzerland, 2008. 753558enUS - XII.08 - RDV

Leica Geosystems AG  
Heerbrugg, Switzerland

[www.leica-geosystems.com/hds](http://www.leica-geosystems.com/hds)

- when it has to be **right**

**Leica**  
Geosystems